



Technical Data Sheet

Multi-Pro XS is a Medium Density Magnesium Oxide panel which has been developed to provide the System Build and Off-Site Construction Markets with a new fire rated external wall panel system.

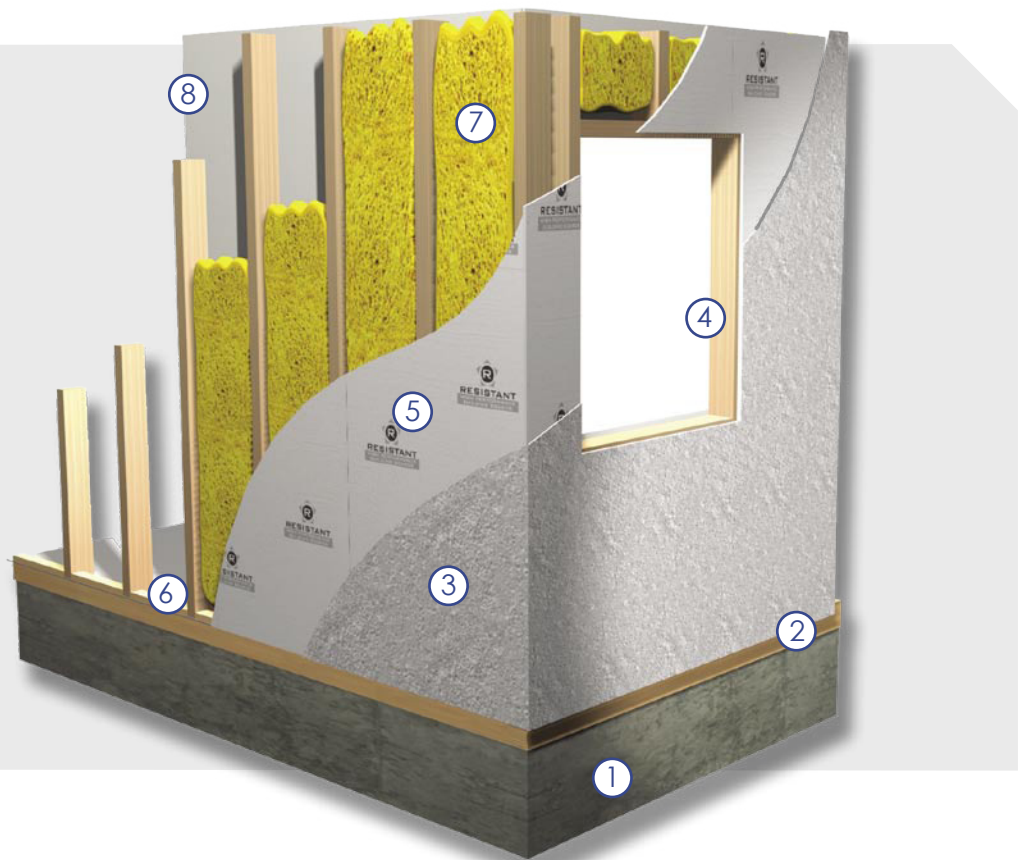
Multi-Pro XS is tested to BS EN 594 (Racking), is A1 Non-Combustible, has a low environmental impact and provides a stable substrate to bond various finishes.

Externally, Multi-Pro XS can be faced with Plastisol coated steel, acrylic based render systems, or brick slips, providing your design team with unlimited options. Internally, fire rated laminated plasterboard using Cova PVC coverings can be used to provide the internal finish of your choice.

60 minute Fire Wall for modular construction

Key:

- 1 Timber Stud
- 2 Timber Floor
- 3 Plasticol coated 0.5mm steel
- 4 Window Opening
- 5 9mm Multi-Pro XS
- 6 Timber Floor
- 7 RWA 45 Insulation
- 8 12mm Fireline plasterboard with COVA PVC finish



MANUFACTURE

RESISTANT Multi-pro XS is manufactured using inorganic substances, SiO₂, CaCO₃, MgO, MgCl₂, and alkaline resistant fibreglass mesh.

The product is naturally cured using no energy through cold fusion unlike similar competitive products on the market which use autoclaving technology. This ensures that RESISTANT Multi-Pro XS has a relatively low impact on the environment. Multi-Pro XS achieves its superior strength and flexibility by the introduction of four layers of alkaline resistant glass fibre mesh. Consistent high quality of the product is maintained and monitored through a sophisticated digitally controlled process to ensure a superior finished board always reaches our commitment to quality assurance.

TYPICAL USES

It is ideal for applications requiring a combination of these properties, for example:

- Closed Cell Timber Frame
- Fire Rated Modular Construction
- Prisons
- Park Homes
- Anti-Vandal Units
- False Chimney Breasts



Technical Data Sheet

| Technical SPECIFICATION | Test Subject | Test | Result |
|---|-----------------------------|---------------------------|---|
| | Density Dry (ex works) | | 1050 kg/m ³ (+/- 10%) |
| | Modulus of Rupture | BSEN 310 | 17.7 Nmm ² (across grain) 12.4 Nmm ² (along grain) |
| | Modulus of Elasticity | BSEN 310 | 6503 Nmm ² |
| | Impact Strength (Brinell) | | 34 Nmm ² |
| | Vapour Resistance | BSEN 12086:1997 | 3.8 MNs/g |
| | Durability | BSEN 12467 : 2012 | Category B - PASSED |
| | Racking Resistance | BSEN 594 | Category 1 |
| | Thermal Conductivity at 50° | | 0.307 w/m/°k |
| | Fire Test | A1 Euroclass | Class Non-Combustible |
| Change in thickness (After immersion in water) | BSEN 317 | 0 - 0.1% Nmm ² | |
| Tensile Strength (Perpendicular to plane) | BSEN 319 | 2.315 Nmm ² | |
| Screw Withdrawal Strength | BSEN 320 | 81.1 N/mm | |
| Pull through Resistance of Fixings | BSEN 1383:199 | 1.371 KN | |
| Average Thickness Swelling | BSEN 321 | 0 | |
| Average Tensile Strength | BSEN 321 | 2.72 Nmm ² | |
| Moisture Content | BSEN 322 | 8.6% | |
| Fire Resistance Steel / Timber Stud | BS 476:Part 20/21:1987 | 60 minutes | |

DIMENSIONS

RESISTANT Multi-Pro XS is supplied as a rectangular board with square edges and white in colour.

| | |
|------------|---|
| Thickness: | 6.5, 9 & 12 mm |
| Sizes: | 1200 x 2400 / 3050 mm 1200 x 2440 mm 1200 x 2700 mm |

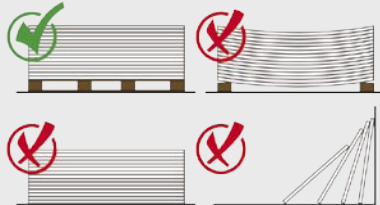
Special size requirements and thicknesses are also available upon request depending on quantity

TOLERANCES

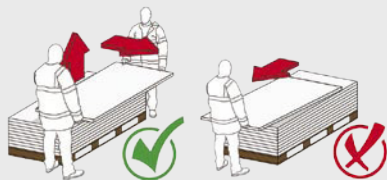
| | |
|---------------------|-------------|
| Length and Width: | + / - 2mm |
| Thickness: | + / - 0.2mm |
| Edge Straightness: | 1mm / metre |
| Squareness of edge: | < 3mm |



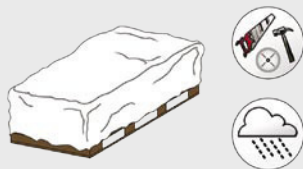
Technical Data Sheet



RESISTANT boards should be stored flat, raised from the ground on a pallet, in dry conditions indoors and be under cover. Boards should not be leant upright for long periods of time



Boards should always be lifted by 2 people and not dragged across each other to prevent unnecessary scratching or damage



Any moisture allowed to infiltrate between the sheets will cause permanent surface staining. They should be protected from the weather and other trades on site at all times



Boards should be carried on edge and extra precaution should be taken to protect the visible front edge and corners

SUPERIOR ATTRIBUTES

Apart from accepting a variety of painted/polished finishes, RESISTANT boards provide an excellent compatible surface to a wide range of finishing materials i.e. paints, tiles, veneers, laminates or indeed any finishing option that comes to the creative mind of an architect or interior designer. The acceptance of RESISTANT in the highly competitive international market stands testimony to its superior attributes



Fire Rated, Non-Flammable, Non-Combustible
Non-Combustible to BS 476 Part 4
BS EN ISO 1182 - Euro Class A1



Thermal Insulation Properties
Provides a high level of thermal movements during hot and cold cycles (Thermal Shock)



Impact Resistant
An ability to withstand abuse, including surface impact - 34 N/mm



Low Carbon Manufacturing Process
A natural cured process with a chemical reaction using low levels of heat and a lengthy drying out stage



Moisture & Water Resistant
RESISTANT boards will not physically deteriorate when subjected to water or moisture.



Rodent Resistant
Resistant to rodent infestation like mice, rats and insects



Easy and Fast to work
Easy and simple to prepare and attach. Rough surface allows application of renders or direct paint / wallpaper



Mould Resistant
Unlike paper faced/wood based products, does not contain cellulose, limiting mould growth



Breathability
Ensures a healthy, durable working building with a natural ability to absorb and release moisture



Chemically Stable
Produced from natural inorganic raw materials, resulting in a strong, durable chemically stable board



Non-Hazardous to health
Will not cause harm to persons and/or the environment. Produced without asbestos or other inorganic fibres